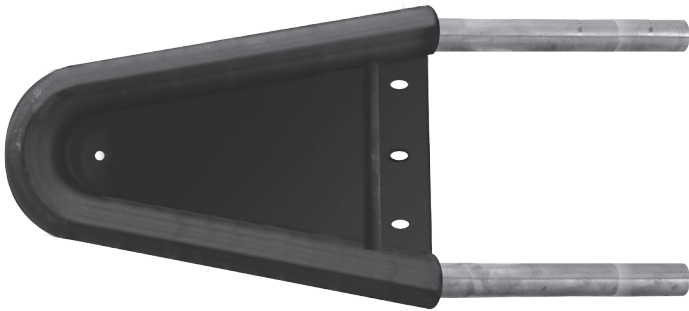


Metro Side Wetback Installation Instructions

⚠ CAUTION! Important Information

- Wetbacks must be connected with water before operating the fire. Water must always be available to the wetback while the fire is in operation.
- Wetback systems are not suitable for use in locations where the water supply has lime content. Lime build up inside the coil will eventually block the coil causing the wetback to fail.

- Rainwater collection tanks installed lower than the wetback that use a water pump to supply the home, can cause problems if the pump is not operational.



METRO SIDE WETBACK

⚠ WARNING! Important Information

- Do not connect to an unvented hot water system.
- Install in accordance with AS 3500.4.1 or NZS 4603 and the appropriate requirements of the relevant building code or codes.

Suitable for installation into the following models:

- Tiny Rad Woody
- Wee Rad
- Wee Rad Base
- Wee Rad Woody
- Wee Ped
- Classic Rad

Please note: This wetback is secured to the outside left hand wall only of the appliance. Left hand is deemed as you are looking at the appliance from the front. No adjustments to your wood fire settings are necessary, this appliance is factory set.

- This Metro requires the rear heat shields to be removed & the circular knock outs removed for copper pipe penetration.
- It is ideal this wetback is installed before the wood fire installation.
- It is recommended the return pipe has a minimum rise of 1 in 12; performance will reduce as the distance to the storage cylinder increases.

Fitting the wetback: (See overleaf for Classic Rad)

1. For best access during this process remove the wood fire door & internal baffle, place both in a safe area so as not to damage parts or painted surface.
2. At all times aside the removed fastenings to a safe location as these will be needed to refit the necessary parts.
3. Remove both the rear heat shield & the rear inner heat shield, both are fixed into position with 8g pozi screws & the inner heat shield is bolted at top only with one M6 fastening.

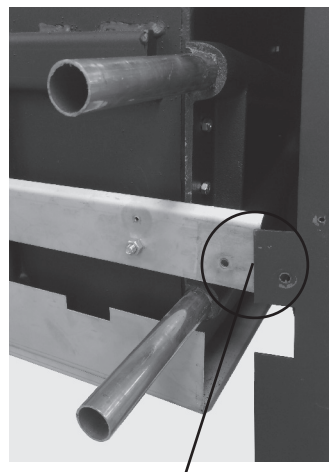
4. As you look from the rear of the appliance undo the very right hand M6 bolt in the spreader bar (illustrated below).
5. Spread the side panel away from the rear fixing point to provide access (illustrated below).
6. Remove all countersunk M6 fastenings in the left side wall of the fire box; these are used for fixing the wetback to the outside wall of the appliance.
7. Apply a liberal amount of Pioneer fire cement (supplied) around the full perimeter of the flat face & over the internal flat area. This is needed for improved heat transfer.
8. Insert the wetback into the gap provided by spreading out the side panel, note the lower tube is positioned under the spreader bar. Fix in place with the provided countersunk fastening & nut at the rear centre slot of the wetback first, tighten but allow for a small amount of movement.
9. Line up the front M6 tapped hole in the casting with the front 8mm dia hole in the fire box wall. Using a second countersunk fastening screw into the casting from the internal of the fire box, discard the M6 nut. Tighten both fastenings to ensure a tight fit to the fire box. Insert and fasten any remaining rear fastenings.

Note: Removal of the baffle as detailed in point 1 allows for easy access through the flue spigot.

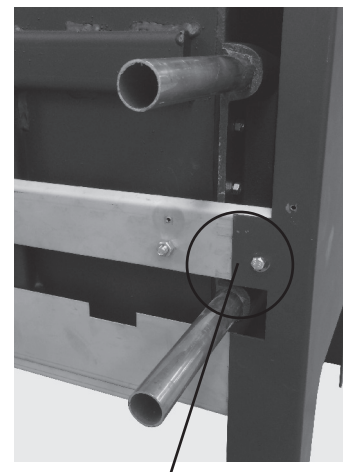
10. Reassemble the rear heat shields, inner heat shield first.

Note: both require the circular knock out plates removed from the respective heat shields. It is absolutely critical these heat shields are placed back onto the appliance correctly with all bolts & screws in place & done up tightly.

11. The wetback is now fitted & ready for connection into your hot water cylinder using standard plumbing practice.



Right hand M6 bolt undone & side panel 'spread' for access



Wetback installed and side panel re-fastened. Heat shields to go back on for completion

Metro Side Wetback Installation Instructions - continued

Fitting the wetback to the Classic Rad:

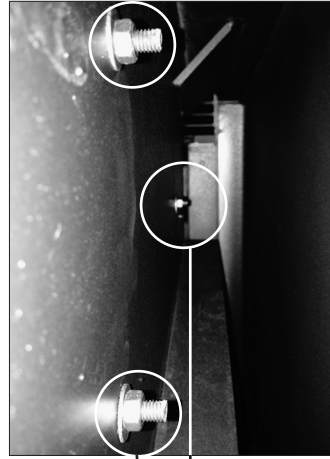
1. For best access during this process remove the wood fire door & internal two piece baffle, place all in a safe area so as not to damage parts or painted surface.
2. At all times aside the removed fastenings to a safe location as these will be needed to refit the necessary parts etc.
3. Remove both the rear heat shield & the rear inner heat shield, both are fixed into position with 8g pozi screws & the inner heat shield is bolted at the top only with one M6 fastening.
4. Remove the three countersunk M6 fastenings in the left side wall of the fire box; these are used for fixing the wet back to the outside wall of the appliance.
5. Apply a liberal amount of Pioneer fire cement from the 70ml tube supplied around the full perimeter of the flat face & over the internal flat area. This is needed for improved heat transfer.
6. Insert the wetback into the gap provided. Fix in place with the provided countersunk fastening & nut at the rear top slot of the wetback first, tighten but allow for a small amount of movement.
7. Line up the front M6 tapped hole in the casting with the front 8mm dia hole in the fire box wall. Using a second countersunk fastening screw into the casting from the internal of the fire box. Insert and fix the last rear fastening and tighten all fastenings to ensure a tight fit to the fire box.

Note: Removal of the baffle as detailed in point 1 allows for easy access through the flue spigot.

8. Reassemble the rear heat shields, inner heat shield first.

Note: Remove the circular knock out plates from the outer heat shield. It is absolutely critical these heat shields are placed back onto the appliance correctly with all bolts & screws in place & done up tightly.

9. The wetback is now fitted & ready for plumbing connection into your hot water cylinder using standard plumbing practice.



Classic rad fastening positions for the side wetback



Side wetback placement with inner heat shield re-fitted

Metro wetback connection heights (Measurements shown are in mm)

Model	N	O
Tiny Rad Woody	365	555
Wee Rad & Wee Rad Base	295	485
Wee Rad Woody	365	555
Wee Ped	295	485
Classic Rad	393	583

Please note:

Wetback connections for the Wee Rad, Wee Rad Base, Wee Rad Woody and Wee Ped are 226mm left of the flue centre facing the Metro/wall.

Wetback connections for the Tiny Rad Woody and Classic Rad are 184mm left of the flue centre facing the Metro/wall.

