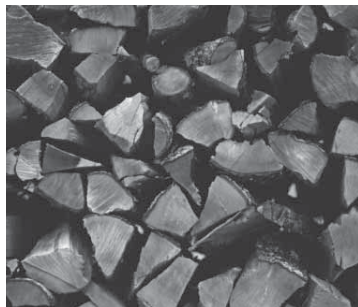


Wood Fire Installation Manual



metrofires

LTD Freestanding Models

Radiant Fires

- LTD Wee Rad
- LTD Xtreme Rad
- LTD Mega Rad

Pedestal Fires

- LTD Wee Ped
- LTD Xtreme Ped
- LTD Euro Ped
- LTD Mega Ped

*Refer to the other side of this manual for Metro owners operation and warranty details

⚠ WARNING! Important Information

- **IF YOU DON'T READ THIS ENTIRE MANUAL, YOU MUST READ THIS FIRST PAGE!**
- **The appliance and flue-system shall be installed in accordance with AS/NZS 2918 and the appropriate requirements of the relevant building code or codes**
- **Any modification of the appliance that has not been approved in writing by the testing authority is considered to be in breach of the approval granted for compliance with AS/NZS 4013**

⚠ CAUTION! Important Information

- **Mixing of appliance or flue-system components from different sources or modifying the dimensional specification or components may result in hazardous conditions. Where such action is considered, the manufacturer should be consulted in the first instance.**
- **Do not install a Metro if any sign of visible damage**

This Metro wood fire has been tested to either AS 2918:1990, NZS7421:1990 or AS/NZS2918:2001. All Metro wood fires comply with AS/NZS2918:2001 when installed in accordance with this manual. Please ensure you are fully conversant with the relevant standard and the contents of this manual. Correct installation is critical to the safe operation and performance of this wood fire.

Please take particular note of the following:

- It is recommended that Metro's be installed with a Metro ECO flue system which has been developed to enhance the performance of Metro wood fires. Any alternative flue system must have a minimum flue pipe length of 4.2 metres of 150mm diameter flue pipe.

- The 150mm active fluepipe must be fully encased from the ceiling to the underside of the flashing cone at the top of the flue system, (i.e. there must not be any 150mm fluepipe exposed).
- All fluepipe joints must be sealed and riveted; the bottom of the fluepipe in particular **MUST** be fully sealed into the flue outlet of the Metro wood fire.
- In New Zealand, the Metro must be bolted through the floor protector into the floor to comply with the seismic restraint provisions of AS/NZS2918:2001
- All Metro's are extremely heavy varying in weight from 85kgs up to 150kgs. During the installation process do not lift the appliance by yourself, and take care not to damage the panel coating.

Assembling your Metro wood fire

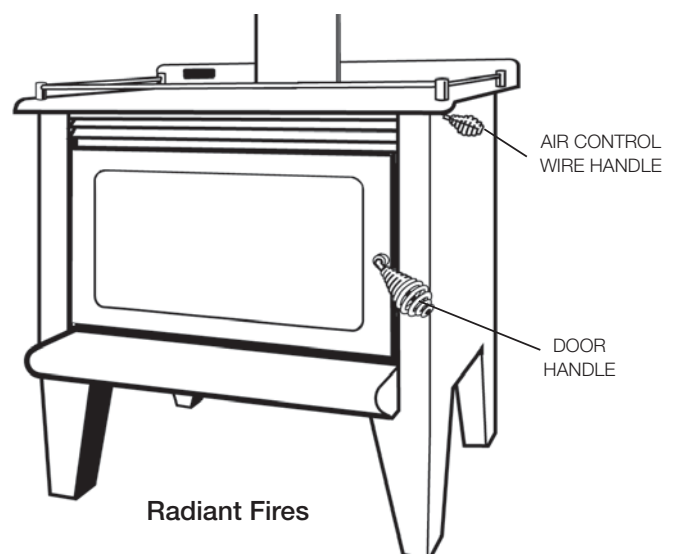
All Metro wood fires are packed in a single heavy-duty carton, and bolted to a wooden pallet. Having removed the packaging and located this manual, familiarise yourself with the illustrations on page A & B, and proceed as detailed below.

Note: the Metro carton shows the model Metro you are about to install, enabling you to select the appropriate model's assembly instructions.

Metro LTD Radiant Fires

These Metro's are supplied virtually fully assembled. Packed inside the firebox you will find two bricks in a cardboard wrapper, a door handle and, the air control wire handle.

- Remove the two securing bolts located at the base of each rear leg which secure the Metro to the wooden pallet, and carefully "walk" the Metro off the pallet.
- Open the door fully and fit the side bricks to each side of the firebox. Location lugs are fitted to the base and rear of the firebox to retain the side bricks in position. Refer to Diagram 2.
- Attach the door handle to the door latch assembly by screwing it on clockwise.
- Attach the air control wire handle by screwing it on clockwise.



Assembling your Metro wood fire

Metro LTD Pedestal Fires

To minimise freight damage, the pedestal has not been attached but is packaged inside the firebox. Some assembly is required as illustrated in Diagram 1 below. Open the door of the Metro and remove the following:

- The pedestal packed in a cardboard tray
 - The pedestal mounting plate
 - The pedestal heat shield (X-treme, Euro and Mega models only)
 - Two side bricks in a cardboard wrapper
 - Door handle and bolt bag.
- Remove the two securing bolts from the base of the firebox which secure the Metro to the wooden pallet, close and latch the door.
 - Remove the “cook top” grill and lay the collapsed Metro carton on the floor behind the Metro. Place one hand into and securely grip the flue outlet, place your other hand under the front of the pallet base and gently tip the Metro backwards until it is resting on its back.
 - Fully open the Metro’s door, taking care that the door does not fall closed; take the four 6mm bolts from the bolt bag and insert them through holes provided in the firebox base.

Metro X-treme, Euro and Mega models only: Fit the pedestal heat shield over the four bolts as shown in Diagram 1, with the open edge facing the front of the Metro (up).

- Position the pedestal with its front facing up over the four bolts and fit the nuts and washers supplied. Check to ensure the pedestal is correctly aligned and securely tighten the nuts.
- Close and latch the door. Gripping the flue outlet once more, gently raise the Metro until it is upright. Refit the “cook top” grill and attach the door handle to the door latch assembly by screwing it on clockwise.
- Open the door fully and fit the side bricks to each side of the firebox. Location lugs are fitted to the base and rear of the firebox to retain the side bricks in position - refer to Diagram 2

All Metro LTD Models

Check to ensure the top baffle is in its correct position in the top chamber of the firebox; it should be resting on four support lugs (two on each side of the firebox). The baffle must be hard back against the rear of the firebox with the “promet extension” (white board) facing forward as illustrated in Diagram 2.

Note: Mega Ped/Mega Rad have a 2 piece top baffle and a third firebrick which is fitted to the rear wall of the firebox.

Diagram 1

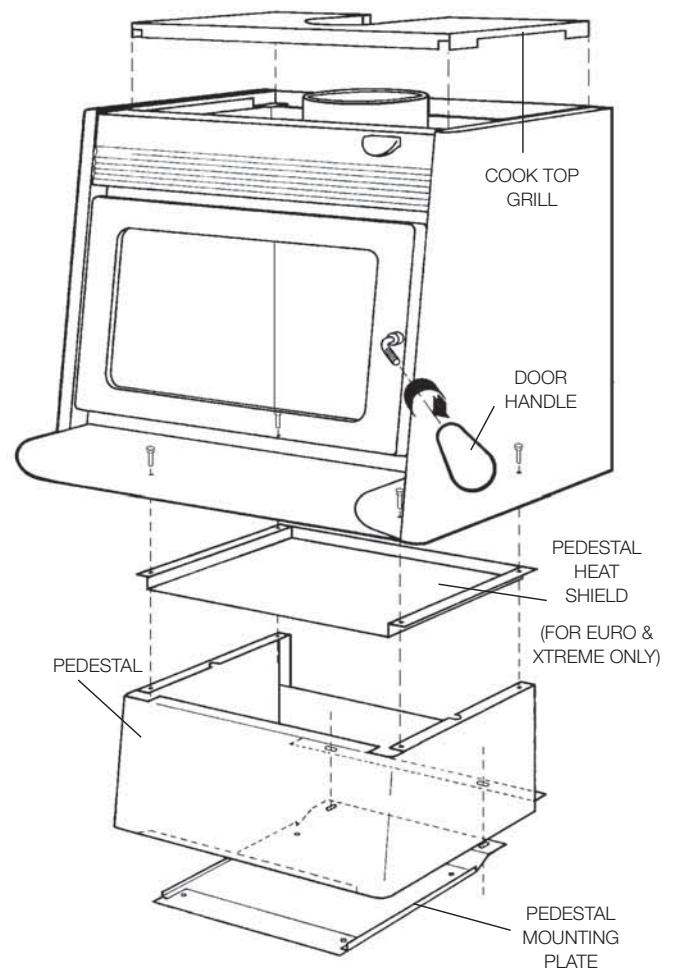
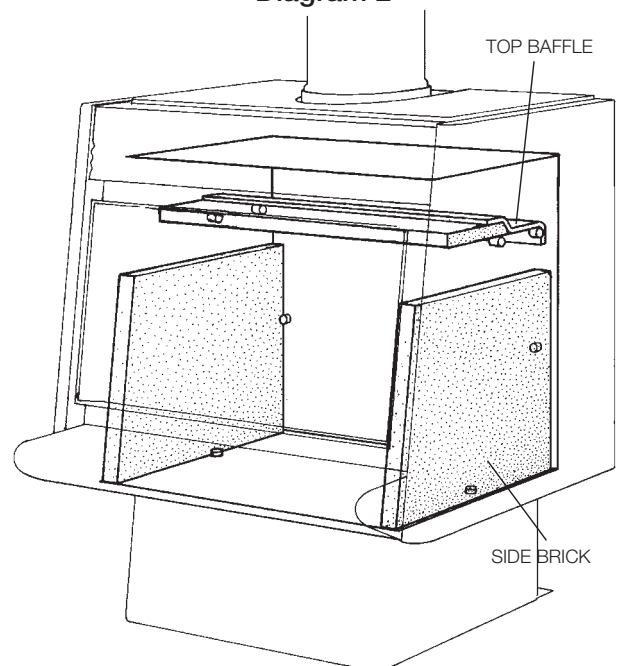


Diagram 2



Floor Protector Size, Construction & Fitting

Pioneer manufacture an extensive range of what Pioneer term “Ash Floor Protectors” which comply with the minimum floor protector requirement of AS/NZS2918;2001, and can be installed with any freestanding Metro wood fire.

Metro freestanding wood fires DO NOT require an insulating floor protector as they comply with the minimum floor protector requirements of AS/NZS2918;2001. These minimum floor protector requirement are;

- They must be of adequate size to give appropriate wall, rear and front clearances/projections as detailed below and in the chart illustrated on the opposite page “D”.
Note;
- The floor protector must extend 200mm horizontally to the rear and each side directly below the door opening, and 300mm forward of the door opening.
- The upper surface of the floor protector must be made of non combustible material.
- A suitable floor protector for a Metro freestanding wood fire is therefore any non-combustible material which could include;
- Ceramic tiles with grouted joints fixed directly to timber flooring.
- A sheet of toughened glass, panel steel etc. laid directly onto a wooden or other combustible floor.

Note: If being installed onto a concrete or non-combustible floor a floor protector is not required.

Fitting the Floor Protector

Once the floor protector is constructed and laid in final position, you are ready to locate the position where the Metro will sit on the floor protector. This procedure varies depending on the model:

Metro LTD Radiant Fires

Lift the Metro onto the floor protector and using a tape measure to ensure that the minimum wall clearances and front floor protector projections as detailed in the chart on opposing page D are met or exceeded. Once the Metro’s location on the floor protector is established and if the installation is in New Zealand, seismic restraint is required.

Using masonry anchors if the floor protector is on a concrete floor or coach bolts if a wooden floor, secure through the holes provided at the base, behind both rear legs.

Note: the anchors must pass through the floor protector and securely anchor the Metro to the floor.

Metro LTD Pedestal Fires

These models are supplied with a “pedestal mounting plate”. Refer to Diagram 1 on page B. Place the mounting plate

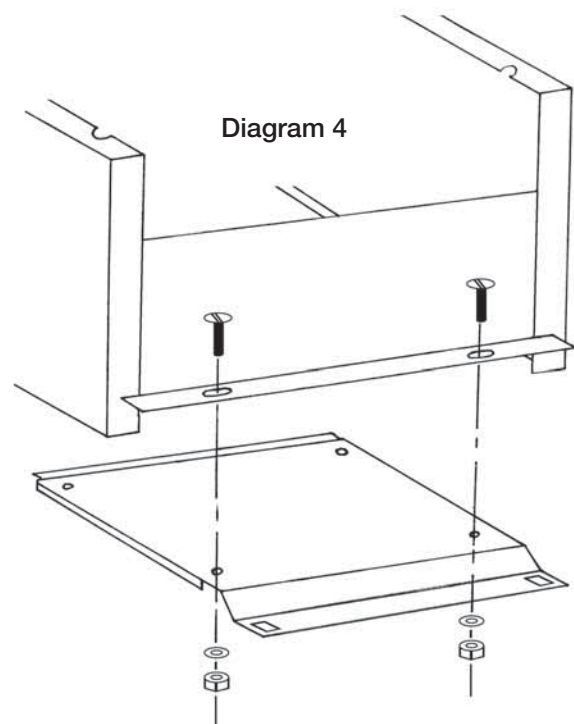
on the floor protector with the two slots at the rear. A flue centre hole is marked on this plate and a chart is attached enabling you to locate the position of the Metro without placing the Metro onto the floor protector. Once the location of this mounting plate is established, secure it through the floor protector into the floor using a minimum of two of the four holes provided, diagonally opposite each other. Suitable anchors are as detailed below left for the Metro Radiant Fires.

Alternative Metro mount plate installation

For installations when it is desirable to position the assembled Metro prior to bolting down, it is possible to “invert” the mounting plate and use it as a means of bolting the Metro direct to the floor, through the hearth. Refer to Diagram 4 and note;

1. Rotate the mount plate 180 degrees so the label faces downwards.
2. Remove the two “slide nuts” from the rear face of the mount plate.
3. Secure the mount plate to the pedestal with 6mm bolts through holes provided as illustrated.

You can then bolt down the Metro through the two rectangular slots in the rear edge of the mount plate. These slots are more accessible than bolting direct through the pedestal, and it also eliminates the need for spacers.

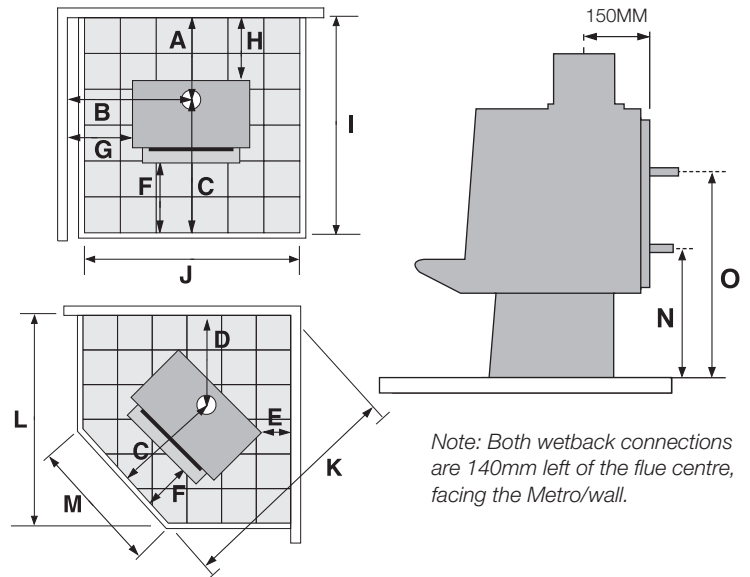


Clearance Chart

Measurements listed below are the minimum required, stated in millimetres. Measurements are taken from the following reference points as illustrated:

- From the nearest combustible wall or surface (A, B, D, E, G, H)
- From the Metro's flue centre (A, B, C, D)
- From the outermost point of the Metro's cabinet construction (E, F, G, H)
- To the edge of the ash floor protectors non-combustible surface (C, F, I, J, K, L, M)

The Metro Wee Ped has also been tested with optional "flueshield side extensions". When fitted into an alcove situation not projecting forward of the Metro with flueshield side extensions fitted, clearances "B" and "G" reduce by 80mm for the Wee Ped.



Metro Installation Clearances

Minimum clearances shown are in mm, with a Pioneer double flue mounted shield fitted.

Model	A	B	C	D	E	F	G	H	I	J	K	L	M
LTD Wee Rad	250	555	580	400	80	200	250	100*	830*	825	1145	950	425
LTD Xtreme Rad	250	575	625	455	80	200	200	100	875	905	1265	1065	505
LTD Mega Rad	270	675	725	500	125	200	300	120	995	905	1425	1175	505
LTD Wee Ped	250	595	580	400	85	200	300	100*	830*	825	1145	950	425
LTD Xtreme Ped	250	575	625	455	110	200	240	100	875	905	1265	1065	505
LTD Euro Ped	250	575	625	455	110	200	240	100	875	905	1265	1065	505
LTD Mega Ped	270	610	725	465	130	200	275	120	995	905	1400	1140	505

* The rear clearance (H) and overall floor protector depth (I) can reduce by 50mm for the LTD Wee Rad and the LTD Wee Ped, providing a wetback is not fitted, and therefore maintenance is not required.

Metro Specifications

Measurements shown are in mm.

Model	WIDTH	DEPTH	HEIGHT	N	O
LTD Wee Rad	607	530	665	295	485
LTD Xtreme Rad	750	575	745	353	543
LTD Mega Rad	750	675	745	353	543
LTD Wee Ped	590	530	665	295	485
LTD Xtreme Ped	670	575	715	340	530
LTD Euro Ped	670	575	715	340	530
LTD Mega Ped	670	675	715	340	530

⚠ WARNING! Important Information

- **Do not connect to an unvented hot water system.**
- **Install in accordance with AS 3500.4.1 Or NZS 4603 and the appropriate requirements of the relevant building code or codes.**

Wetbacks

All LTD Metros can be fitted with an optional 3kW or 4kW wetback, designed to give maximum output with minimal effect on the operation of the fire. Only Pioneer's cast jacket wetback system as illustrated on Page 2 (reverse side of this manual) should be fitted to a Metro; alternative wetbacks will void the Metro's emission approvals and may seriously affect the performance of the appliance and void the owner's warranty.

Note; Wetback and Boiler systems are not suitable for use in locations where the water supply has lime content, lime build up inside the coil will eventually block the coil causing the wetback to fail.

Both 3kW and 4kW wetback options are fitted to the inside rear of the firebox, with the connection pipe heights illustrated and detailed on the previous page "D". Please note:-

- Both wetback connections are 140mm left of the flue centre, facing the Metro/wall; the return pipe connection is directly above the inlet connection.
- Reduced height pedestals are available for certain models to reduce wetback connection heights. Refer "Reduced height pedestals" section on the following Page "F".
- It is recommended the return pipe has a minimum rise of 1 in 12; performance will reduce as the distance to the storage cylinder increases.

To fit the Wetback proceed as follows:

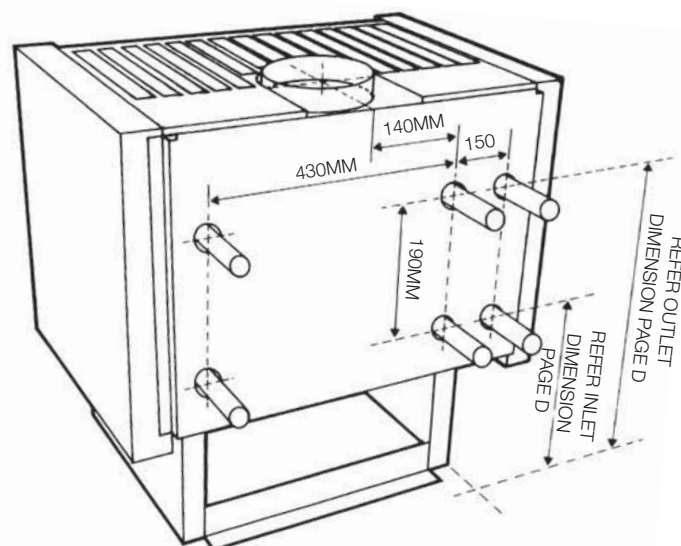
1. Remove the rear panel of the Metro by removing the four pozi drive screws. Remove the two pre-punched knockouts from this panel.
2. Two further knockouts will be visible on the inner rear heatshield; remove these also. Once these are removed 6mm nuts will be visible through the knockout holes.
3. Open the Metro's door and locate two bolts securing the pressed washers which are visible on the left hand side of the firebox for both inlet and outlet connection points.
4. A further three bolt heads will also be visible on the inside rear wall of the firebox; these are threaded into the 6mm thick firebox. Remove all three.
5. Using the tube of sealant supplied with the wetback, apply a liberal bead of sealant around both connection holes on the inside of the firebox. On the rear of the wetback casting apply the remaining contents of the tube equally around both connection pipes.

6. Fit the wetback into the firebox and carefully pass the connection pipes through the holes in the rear of the firebox. Securely attach the wetback using the three bolts previously removed from the rear face of the firebox, fitting them through the slots provided in the wetback's jacket.
7. The wetback is now ready for connection to the storage cylinder by a registered plumber.

Boilers

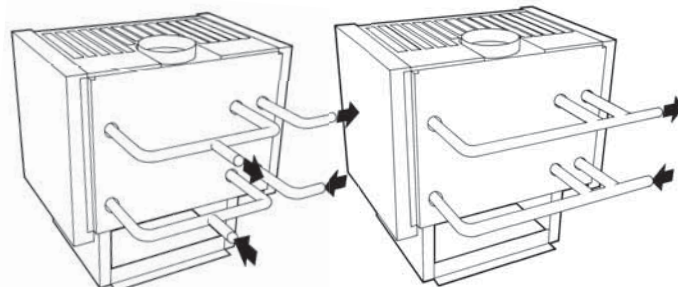
Pioneer manufacture a 7kW boiler option for its larger model Metro's, the Mega Rad and Mega Ped. This 7kW boiler is a retrofit-able option.

The intended function of the boiler is as a heating source for hydronic heating systems with radiators being an ideal application. The Metro boiler is split into three separate heat exchangers, giving the option of running a split or manifold system as detailed below.



METRO BOILER
SPLIT SYSTEM

METRO BOILER
MANIFOLD SYSTEM



Reduced Height Pedestals

Metro offer a pedestal cut down service, for a fee you can have the pedestal cut down, which is sometimes required if you are replacing an older wood fire with a wetback. If you require this service, the pedestal from your fire must be sent back to Pioneer, and they will carry out the alteration.

Important Points

- The minimum forward projection (F) will increase by the amount the pedestal is being lowered, so if you require 40mm reduced from the pedestal, your forward projection (F) will become 240mm.
- Reducing the pedestal height will require the Metro to be installed on an insulating floor protector.

Flue Installation

It is recommended that all Metro freestanding wood fires be installed with the energy efficient Metro ECO flue system which comes complete with detailed installation instructions. Any alternative flue system must comply with and be installed as detailed AS/NZS 2918:2001.

All Metro's require a 150mm diameter flue. Please note:

- All joints in the fluepipe must be sealed with Pioneer fire cement (or similar) and riveted.
- The base of the fluepipe must be sealed into the outlet of the Metro's flue stub.
- Refer "Important Information" on page A.
- The flue systems 150mm diameter fluepipe must terminate a minimum of 4.6 metres above the top surface of the floor protector.

Pioneer Flueshield

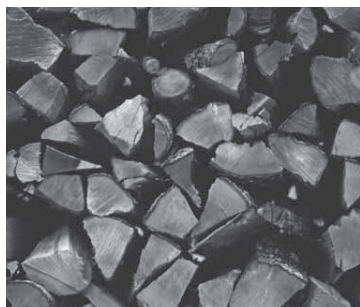
If the Metro requires a flueshield to be fitted to reduce wall clearances, only the Pioneer vented double flueshield is tested and approved to be fitted onto a Metro wood fire and only required to shield the first section of flue. Do not extend the flueshield beyond this point as this will result in the ceiling temperature exceeding the allowed maximum.

Brackets are supplied with the Pioneer vented double flueshield; the "flat" lower bracket is intended for all models other than the Metro Radiants. These Metro Radiants utilise the folded lower bracket which fits inside the flue outlet. Full fitting instructions are included with the Pioneer vented double flueshield.

PIONEER
M A N U F A C T U R I N G L I M I T E D

Mamaku St PO Box 11 Inglewood New Zealand
info@metrofires.co.nz www.metrofires.co.nz

Wood Fire Owner's Operation and Warranty Manual



metrofires

LTD Freestanding Models

Important information	1	Cleaning and maintenance	4-5
Where to install a Metro in your home	2	Troubleshooting	5
Optional wetbacks	2	Metro warranty	6
Getting to know your Metro	3	Optional 10 year warranty	7
Operating your Metro	3-4	Pioneer wood fire accessories	8

*Refer to the other side of this manual for Metro installation details

WARNING! Important Information

- **IF YOU DON'T READ THIS ENTIRE MANUAL, YOU MUST READ THIS FIRST PAGE!**
- **Any modification of the appliance that has not been approved in writing by the testing authority is considered as breaching AS/NZS 4013**
- **Do not use flammable liquids or aerosols in the vicinity of this appliance when it is operating**
- **Do not use flammable liquids or aerosols to start or rekindle the fire**
- **Never operate your Metro with the door ajar, except on initial start up**
- **Do not store fuel within the Metro's specified installation clearances**
- **Do not dry clothes on or near this appliance**
- **Open the air control before opening the Metro's door**
- **Never operate your Metro Ped with the cook top grill removed**

CAUTION! Important Information

- **This appliance should be maintained & operated at all times in accordance with this instruction manual**
- **This appliance should not be operated with a cracked glass or faulty/missing door seal**
- **Do not use driftwood, treated or unseasoned (wet) fuel, the use of most types of preservative treated wood as fuel can be hazardous**
- **Do not empty ash into a combustible container**

Congratulations on the purchase of your Metro wood fire

This low-emission, slow combustion appliance is designed to give you many years of warmth and service, subject to three critical factors. These three factors, if not adhered to are the major causes of unsafe installation, poor performance and flue blockages and failure.

1. Your Metro wood fire must be installed correctly, by a competent or suitably qualified installer.
2. You must burn properly seasoned dry wood.
3. You must know how to correctly operate your Metro wood fire, particularly on extended burn cycles.

It is therefore very important you read this page carefully, and preferably this entire section, pages 1 to 8

Please note the following important points: -

- This manual is in two sections, with the installation section detailed at the rear of this booklet. Keep this instruction manual for future reference.
- In New Zealand a building consent is required from your local building authority; the homeowner is responsible for obtaining this consent.
- As correct installation is critical to the performance and safe operation of your Metro, it is recommended your Metro be installed by a registered installer or a person suitably qualified in the installation of wood fires. Your Metro retailer will be able to arrange professional installation for you.
- During the very first fire your Metro will give off an odour and fumes as the firebox paint cures. Do not be alarmed; open all windows and externally opening doors in that room and close any internally opening doors. This curing process will last for approximately one hour and will only happen this one time.
- All freestanding Metro's covered by this manual make ideal cooking appliances.

- Properly seasoned (dry) timber is necessary for the Metro to operate efficiently; firewood that contains a high moisture content will result in fluepipe blockages and reduce the heat output.

Note: Softwood usually takes 12 months to season - Hardwood can take up to 24 months to season - Wood must be stored in a location that enables free air circulation. Wet wood stored in a closed woodshed without air circulation will still be wet 12 months later.

- For optimum performance fuel should be loaded so the logs lay "front to rear" in preference to laying across the width of the firebox. Spaces should be left between the logs to enable oxygen to get to as much of the surface of the fuel as possible.
- It is critical that the fire not be operated with faulty or missing door seals, faulty or missing promet extension (front white board on the baffle plate) cracked or broken door glass. These three areas require regular inspection/maintenance and if not maintained will void the firebox warranty.
- A small hot fire loaded frequently is more efficient than a large fire burning on a low setting.
- A key feature of all LTD Metro's is their ability to burn at a very low rate. However, if not operated correctly this feature can cause many problems including flue blockages, and severe corrosion of the lower flue pipe and firebox flue spigot, neither of which are covered under warranty if they fail through improper use. It is therefore most important you read the "extended burning" section on page 3 of this manual.
- Your Metro is covered by a full twelve-month warranty, and a five-year firebox warranty. You can extend this firebox warranty to ten years if you purchase the optional extended firebox warranty as detailed on page 7.

Where to install a Metro wood fire in your home

Wood fires are usually installed in the main living area, which is the section of the home that is usually kept the warmest, being the area in the home most frequently occupied. However, before deciding on the best location for your Metro wood fire you may wish to consider:

- Water heating. If you are intending to have a wetback it is important that the wood fire is as close as practically possible to the water storage cylinder.
- Split level homes are best heated when the wood fire is installed on the lower level, as the heated air will rise to the higher levels.
- Building construction is another consideration. Specified clearances from walls, curtains etc must be maintained

and you need to ensure no structural beams or internal gutters etc are directly above your preferred site. If you have a two storey dwelling you need to consider the second storey to ensure you don't have the flue directly outside a second storey window.

Generally, you can install your Metro in your home anywhere that suits you; Pioneer offer various fan systems to transfer heat to sections of the home that are not heated sufficiently. It is necessary if using a fan system that the Metro you have purchased has sufficient output to heat the total area you wish to heat. Your Metro retailer or installer will be able to advise if you are uncertain.

Optional wetbacks and boilers

Water heating is another key feature of your Metro wood fire; all models can be fitted with the optional 3kW or 4kW wetback, which are designed to give maximum output with minimal effect on the operation of the fire. Only the Pioneer cast jacket wetback system as illustrated on the right should be fitted to your Metro; alternative wetbacks will void the Metro's emission approvals and may seriously affect the performance of the appliance and void its warranty.

Note: Wetback and Boiler systems are not suitable for use in locations where the water supply has lime content. Lime build up inside the coil will eventually block the coil causing the wetback to fail.

Cost Savings

Wetbacks can enable substantial power savings, dependent on the climate in the area in which you live. If you live in a cold climate you are likely to use your Metro for many months of the year, in which case a Pioneer wetback will reduce or even eliminate your water heating costs over those months. If however you live in a warmer climate and use your Metro for only a few hours a day over the colder months, electricity savings will be considerably less.

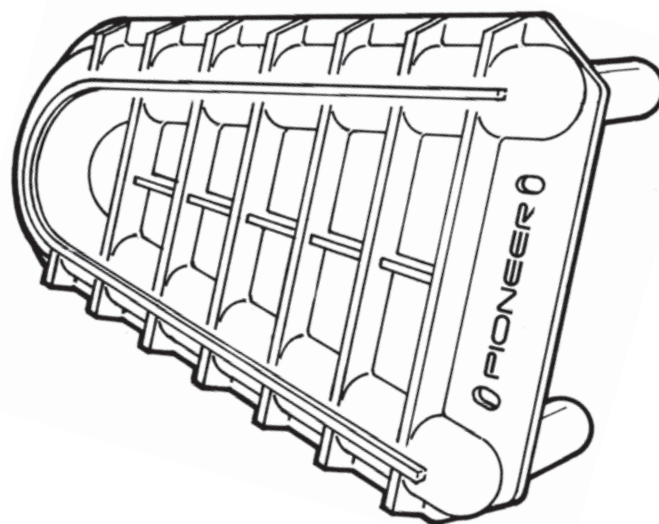
3kW or 4kW

The 3kW wetback is usually adequate for most homes; however, if your hot water use is considerable the 4kW would be preferable. Other considerations are:

Distance from the Metro to the storage cylinder will affect the amount of hot water produced. If it is more than 2 metres away the 4kW is usually preferable.

Your climate and the manner in which you will "fire" your Metro are the most relevant factors in choosing the correct output wetback. If you are in a moderate climate or have a modern well-insulated home you are likely to be running your Metro on lower output settings, in which case the 4kW should be used. If however you live in a cold climate, or have an older, cold or large home you are more likely to be "firing" your Metro on a higher burn rate, in which case the 3kW would be better suited.

THE PIONEER WETBACK DESIGNED FOR METRO WOOD FIRES



Water Pressure

A common misconception is that you must have a low-pressure system to have a wetback; this is not true. You must have a "vented" system and high-pressure cylinders are usually not vented. However you can install an "indirect" cylinder which contains a secondary coil inside the storage cylinder, enabling you to have a wetback while retaining a high-pressure system.

Boiler Options

The larger Metro Mega Rad and Metro Mega Ped are available with a retrofit-able 7kw boiler option as detailed on page "E" on the reverse side of this manual, and is designed for connection to a hydronic system.

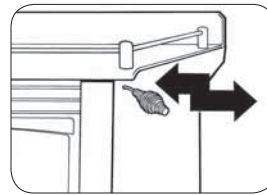
Getting to know your Metro wood fire

Operating your Metro wood fire is simple and you will quickly learn how to get the best from it. First take a minute to familiarise yourself with your new Metro:-

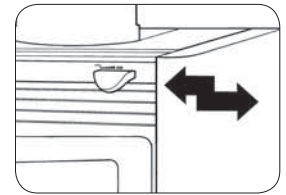
- Raise the door handle anticlockwise until the latch releases, then slowly pull the door open. You will note that if you let the door go before it is at 90° to the appliance, it will fall closed; this is a safety feature that ensures the door cannot fall open if it is not latched securely. For the door to remain open, you must open it fully.
- There is a single air control making your Metro easy to adjust. This control moves from left to right, which is “low to high”.

The Metro Radiant Fires have a wire air control handle located at the upper right hand side of the appliance. Simply pull out to increase burn rate or push in to reduce burn rate.

All other model Metro's have an air control knob located on the upper front of the appliance.



RADIANT FIRES AIR CONTROL



PED FIRES AIR CONTROL

Slide this control knob gently from right to left until you reach a stop; this is a pre-set “low” position. Your Metro must not be operated at a lower burn rate than this pre-set low allows.

Safety off provision

All LTD Metro's have an “off” provision which enables the air control to be fully closed during fluepipe cleaning, and more importantly to enable all primary oxygen to the fire to be cut off in the likely event of a fluepipe fire. To engage the “off” provision, lift the air control knob fully and move it fully to the left.

Operating your Metro wood fire

If your Metro has only been installed within the past few days, the fire cement seal at the base of the flue will not be fully cured. To ensure the cement sets without blistering it is recommended you burn 2 to 3 sheets of loosely crumpled newspaper at a time, approximately once every hour over a 6 to 8 hour period.

During the very first fire your Metro will give off an odour and fumes as the firebox paint cures. Do not be alarmed; open all windows and externally opening doors in that room and close any internally opening doors. This curing process will last for approximately one hour and will only happen this one time.

Start up

Place a quantity of loosely crumpled newspaper on the base of the firebox until it is approximately 50% full of paper, or place firelighters on the base of the firebox. Add dry kindling and move the air control knob fully to the right, being the “full open” position.

Light the paper at two or three locations across the front of the door opening and leave the door slightly ajar if necessary for a few minutes while the fire establishes. Once the kindling is burning well, open the door and add 2 or 3 small logs at a time until you have a well-established fire. Usually this will take approximately 30 minutes, during which time the air control should be set on “high” and the door should be closed, except for the initial few minutes and when fuel is being added.

Normal operation

Once the fire is well established, regulate the air control to achieve the desired burn rate and heat output. As you move the air control to the right, burn rate, firebox temperature and heat output will increase, if you move the control to the left they will decrease.

Note:

- Always open the air control fully prior to opening the door, then open the door slowly.
- When loading logs, place them end-on, “front to back”; air spaces should be left between the logs to enable oxygen to get to as much of the surface of the fuel as possible.
- Every time you refuel, leave the air control on “high” for a minimum of 10 to 15 minutes.
- Never use the door to force wood into the firebox, as this is likely to break the glass.

Extended burning

It is most important if your Metro is to be refuelled and turned down for a slow extended burn period, such as an overnight burn that you operate it correctly:

⚠ CAUTION! Important Information

- **If not operated correctly on extended burn cycles, your Metro is likely to incur flue blockages, corrosion of the upper baffle, lower flue pipe and firebox flue spigot. As these are not covered under warranty if they fail through improper use, it is important you operate your Metro correctly.**

- The wood used as fuel for extended burning MUST BE FULLY SEASONED (DRY).
- Once the fuel is loaded, the Metro must be operated on high for a period of at least 10 minutes to drive out residual moisture from the fuel (dry wood is usually 20% water content).

Operating your Metro wood fire - continued

- Do not turn the air control down lower than you need to, if you want the Metro to burn overnight, endeavour to obtain an 8 hour burn time, not 12 hours. It will take a few burns to find the correct location of your Metro's air control setting to achieve the length of burn cycle you desire as this setting is affected by several variables including fuel density, flue length and outside wind velocity.

Cooking

All Metro's are designed to enable cooking of soups, stews and casseroles including whole chickens etc, and your Metro will

easily boil a flat bottom stainless steel kettle. The Radiant Fires have a dedicated cooking top enabling large pots to be placed on the cook top, while all other models have a lift-off grill.

Note: Metro's supplied with a lift-off top grill have this feature to enable the grill to be removed for cleaning if you have a spill. The lift-off top grill must be left on when cooking, because if removed the wall temperatures next to the appliance may become excessive and the top of the firebox is generally too hot to cook on directly.

Cleaning and Maintenance for your Metro wood fire

The Radiant Fires are coated with "Stovebright Metallic Black" high temperature paint and will require periodic repainting.

All other model Metro's are coated with;

- Vitreous enamel in a range of darker colours which is extremely durable and designed to last the life of the appliance. As vitreous enamel is glass, a solid or heavy object dropped or banged against a panel could chip the enamel surface.

All model Metro's can be cleaned with a damp cloth when the appliance is not operating.

Door glass

Providing your fuel is properly seasoned, under normal operating conditions the air-wash design of the Metro's firebox will keep the door glass clear. If the glass requires cleaning you may use either a razor blade scraper or an oven cleaner, or you may take a ball of crunched up newspaper, moisten it on one side and dab it in the ash from the firebox; all these work well.

If your door glass breaks it must be replaced with 5mm thick ceramic glass, as other types of glass, including tempered or toughened glass, will explode due to the intense heat inside the firebox.

Door seals

Over time, usually 3 to 5 years, the door and glass seals will become hard and cause air to leak into the firebox, reducing burn time; at this point they require replacing. Your Metro retailer stocks replacement woven fibreglass door and glass seals, and if required will fit these for you.

The door of your Metro is easily removed. Hold it in both hands and lift the hinge end of the door up and over the top hinge pin, then lower the door from the bottom hinge pin.

Side bricks

Hair-line cracks in the side bricks are not uncommon and are a result of the intense heat within the Metro's firebox, coupled with mechanical damage caused by accidental impact when fuel is being loaded. However if the side bricks become cracked to the extent that they start to break up, they must be replaced.

Door adjustment

Provision is available on both sides of the door to enable adjustment as the door seal compresses causing air to leak into the firebox.

To adjust the hinge end of the door, open the door fully, loosen the top hinge nut and slightly lift the latch end of the door; you will see the hinge assembly move back - 1mm will usually be sufficient. Retighten, then repeat by loosening the lower hinge nut, this time applying a slight downwards pressure onto the door to move the lower hinge assembly back a similar distance, then retighten.

The door latch is also adjustable, as the latch pin on the right side of the firebox is fitted through a slot which enables the latch pin to be loosened, moved back and re-tightened.

Ash removal

Over a period of time ash will build up in the base of the Metro's firebox and require removal. The time this build-up takes depends on the density and cleanliness of your fuel, with hardwoods producing more ash than softwoods. To remove the excess ash your Metro should not be operating.

- Open the door, and using a hearth shovel or similar, empty the excess ash directly into a steel or non-combustible container.
- If the ash is not disposed of immediately, be careful where you store it, as the ash can retain heat for many days and become a fire hazard.
- You must leave a bed of ash in the base of the firebox approximately 10mm deep; this insulates the base of the firebox and improves combustion.

Top baffle

This is a 'sacrificial' part of the firebox and should be checked quarterly. Usually only the "Promet" (white board) front section needs to be replaced when it starts to disintegrate.

Note: Cracks in the promet are not uncommon and have no adverse effect on the operation of your Metro. These cracks are the result of intense heat coupled with expansion and contraction.

To remove and replace your top baffle, refer to the fluepipe cleaning instructions on Page 5.

Flue systems

Should be checked annually, particularly the bottom end of the lower flue section at its rear lock formed joint. If deterioration is noticed contact your Metro retailer or installer.

The fluepipe should also be swept a minimum of once a year, or as required during the winter season. If smoke enters the room when you open the Metro's door this usually indicates the fluepipe is becoming restricted and needs cleaning. The frequency of fluepipe cleans depends on many factors, with the main variables being:

- The seasoning of the wood. If not properly seasoned you will require frequent fluepipe cleans.
- The density of the wood. Softwoods generally result in more creosote build-up in the fluepipe. Pioneer Manufacturing Ltd produce a telescopic fluebrush system which is available from your Metro retailer.

To clean the fluepipe of your Metro, proceed as follows:-

- Open the Metro's door fully, reach inside with the palm of your hand face-up and extended, lift the top baffle

approximately 20mm, then lift it forward out through the door opening, placing it on a sheet of newspaper you have placed on the front of the floor protector.

Note – The Mega Ped and Mega Rad have a two piece baffle which is wider than the door opening, it can easily be removed once the firebricks are removed from the firebox.

- Close the door and slide the air control left to the Safety Off Position.
- Once on the roof, remove the cowl from the top of flue system and sweep the fluepipe using a 150mm-diameter fluepipe brush as detailed in the instructions provided with the fluebrush.
- Once the fluepipe is clear, clean and refit the cowl. Remove the excess soot which has fallen into the firebox, leaving a layer of ash 10mm deep on the base of the firebox, then refit the top baffle.

Note: the baffle must be fitted so its rear is touching the back of the firebox; if uncertain refer to Page B in the installation section at the rear of this manual, which shows illustrations of the baffle location.

Troubleshooting your Metro wood fire

If your Metro has been correctly installed, your fuel is dry and you operate it correctly you will find it is a pleasure to use. Pioneer's many years of experience within the wood heating industry has shown that 95% of complaints and customer dissatisfaction are due to fuel, installation or operational problems. The following may be of assistance if you experience any of these symptoms:

A. Smoke enters the room when the Metro's door is opened

This usually indicates the fluepipe needs cleaning and if left, the smoking problem will get worse. To remedy; clean the fluepipe, and to avoid the necessity of regular repeat cleans, ensure your fuel is properly seasoned. If however the Metro has always smoked into the room from the day it was installed, it is likely to be due to insufficient fluepipe length or a faulty/unsealed flue system. To remedy contact your installer or Metro retailer.

B. Occasionally a puff of smoke comes into the room

This is most likely a result of two possible causes:

1. There is insufficient fluepipe height in relation to your roofline, trees or other high obstacles near your home, which is creating a downdraft. Usually a problem when the wind is coming from one particular direction and requires an experienced installer to remedy, by either extending your fluepipe height or fitting a directional "H" cowl.
2. If the Metro is refuelled but the air control is left on a low setting or the fuel is unseasoned, the fuel will smoulder filling the firebox with smoke and combustible gases.

The fuel will eventually ignite and as it does so, the build up of gases causes a pressurisation forcing smoke into the room. To remedy, ensure your fuel is seasoned and you open the air control to full every time you refuel your Metro.

C. I can smell smoke in the room in the morning after a low burn cycle

The smell is creosote that will be seeping through the flue joints or out of the flue spigot onto an external surface, thus creating the smell in your room. The cause will be either unseasoned fuel or incorrect operation on low burn cycles. Creosote is very corrosive and excessive buildups will result in the flue pipe and potentially the flue spigot and upper burn chamber failing. Failure of flue pipe or firebox due to creosote build up is not covered under warranty as creosote build up is only possible from either unseasoned fuel or incorrect operation.

D. The Metro is noisy as it heats up and cools down

There will always be some expansion and contraction noise as the Metro heats and cools, however this can be usually reduced substantially by loosening three nuts at the rear of the appliance. To remedy, locate the 25mm deep cavity at the rear of your Metro between the "rear panel" and the "inner rear heat shield", so you will see a 6mm nut and two 6mm bolt heads in this cavity. Using a 10mm ring or open ended spanner, loosen all three so they are finger tight only.

Warranty Details for your Metro wood fire

Your Metro is covered by a full twelve month warranty, and a five year firebox warranty. You can extend this firebox warranty to ten years if you purchase the optional extended firebox warranty. The standard warranty is detailed below and the optional extended warranty is detailed on the reverse side of this page.

Standard Metro Warranty

(NZ Consumer laws apply to this warranty)

Pioneer Manufacturing Limited warrants the steel firebox against defective materials and workmanship which would render it unfit for normal domestic use within a period of five years after date of original purchase.

All other parts including cabinet, door, door seal, glass, baffle, trim, bricks and if applicable wetback are warranted for a period of one year from date of original purchase for domestic use against defective materials and workmanship.

Warranty Conditions:

- The heater must be installed, operated and maintained strictly in accordance with the building code and the manufacturer's installation and operation manuals.
- This warranty covers replacement or repair at the manufacturer's discretion but excludes freight, travel and/or any other associated costs.
- Operation of this appliance in violation of the warnings in the operation and installation manual will void this warranty.
- Failure to do the necessary inspection & maintenance of this appliance in accordance to the instructions in the operation manual will void this warranty. It is critical that the fire not be operated with faulty or missing door seals, faulty or missing top baffle including the promet extension (front white board on the baffle plate) cracked or broken door glass. These 3 areas require regular inspection/maintenance and if not maintained will void the firebox warranty.

- The manufacturer or their agents are not liable for any loss or expense direct or indirect arising from the failure of any part or operation of the appliance.
- A claim under this warranty should be directed to the retailer who supplied the Metro wood fire, or if this is not possible write direct to the manufacturer stating details of fault, serial number of your Metro, proof of purchase and name of retailer.

Warranty Exclusions:

This Manufacturers warranty DOES NOT cover:

- Service calls which are not related to any defect in the Product (i.e., operational, installation or fuel issues). The cost of a service call will be charged if the problem is not found to be a product fault.
- Defects caused by factors other than normal domestic use or use in accordance with the product's operation manual.
- Defects caused through the product being operated in an "over-fired" manner resulting in sections of the firebox operating excessively hot to the point that sections glow red. (note – This will result in distortion of the firebox)
- Defects to the Product caused by accident, neglect, misuse or act of God.
- The cost of repairs carried out by non-authorized repairers or the cost of correcting such unauthorised repairs.
- Normal recommended maintenance as set out in the Product's Owners Operation Manual.

Service under this manufacturer's warranty must be provided by a repairer authorised by Pioneer Manufacturing Ltd. Such service shall be provided during normal business hours.

PIONEER
MANUFACTURING LIMITED

Mamaku Street PO Box 11 Inglewood New Zealand
info@metrofires.co.nz www.metrofires.co.nz

! IMPORTANT! Complete and retain these details at time of purchase:



Purchase Date

Serial Number

Model

Colour

Retailer

The Optional Ten Year firebox warranty is detailed on the opposite page

Optional 10 Year Warranty for your Metro wood fire

Pioneer Manufacturing Ltd ("Pioneer") offers an extended firebox warranty of ten years from date of original purchase, being an additional five years beyond the standard firebox warranty offered by Pioneer with every Metro wood fire.

Conditions of extended warranty

(Consumer laws apply to this warranty)

- The Metro wood fire must be installed in New Zealand.
- The Metro wood fire must be installed, operated and maintained strictly in accordance with the building code and the manufacturer's Installation and Operation manual.
- This warranty covers replacement or repair of the firebox at the manufacturer's discretion and includes all direct material, freight and labour costs.
- The firebox covered by this extended warranty is the 6mm steel firebox only and excludes baffles, bricks, door glass and door components.
- "Pioneer" is not liable for any loss either direct or indirect arising from the failure of any part or operation of the Metro wood fire.
- This warranty is transferable if the Metro wood fire, or the home in which the Metro wood fire is installed, is sold.
- The Metro wood fire must be installed and used in a domestic application.

Registration of this extended warranty option is direct with "Pioneer" the manufacturer. To register, complete the section at the bottom of this Page and return it to "Pioneer" together with a cheque for \$100.00 inclusive of GST. You will be sent confirmation that your extended warranty is registered on Pioneer's warranty data base together with a tax invoice and warranty registration number.

Extended Warranty Five-Year Service. It is recommended that a full service of the Metro wood fire be carried out at the end of the fifth winter season.

To register the 10-year warranty detach and complete the section below and post to Pioneer together with your cheque for \$100.00



Pioneer Manufacturing Ltd - Extended Warranty Card

Please print in BLOCK letters. Post to: Pioneer Manufacturing Limited, PO Box 11, Inglewood

Metro Owner Details

Metro Purchased

Surname

First name

Address

Phone

Fax

Email

Model

Colour

Serial No.

Wetback

Purchase Date

Retailer



Payment by cheque for \$100.00 attached

To register this 10-year warranty please post together with your cheque for \$100.00 to Pioneer Manufacturing Ltd.

Pioneer Manufacturing heating accessories

Pioneer Manufacturing Ltd distribute a wide range of accessories, many of which are designed to complement your Metro wood fire. Detailed below is a brief description of some of Pioneer's accessories. See your Metro retailer to obtain a copy of the Pioneer Heating Accessories brochure.



Telescopic Fluebrushes

Made from durable long lasting anodised aluminium, Pioneer's fluebrush extends from 1.2 to 3.6 metres. The one-piece handle makes storage easy and extensions are available.



Pioneer Kettle

Pioneer offer a stainless steel kettle which has a flat sandwich base making it ideal for use on a Metro wood fire.



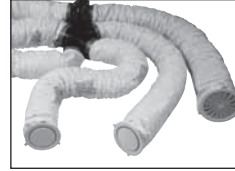
Pioneer Ceiling Fan

Supplied with a 3 speed control switch, Pioneers ceiling fans come in white with a reversible motor enabling them to be used for cooling in the summer months.



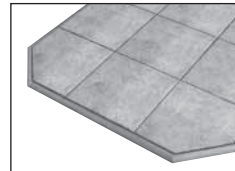
Pioneer Fire Cement

High temperature black silicate cement, designed for sealing solid fuel fires and flue joints.



Pioneer Heat Transfer Duct

Pioneer offer a 1-room and a 2/3-room Heat Transfer Duct to maximise the usage of heat throughout the home. Both ducts comprise of quality components including fans, insulated ducting, superior adjustable outlet diffusers and a stylish thermostat included as standard.



Pioneer Floor Protectors

Pioneer Manufacturing Limited is New Zealand's leading manufacturer of wood fire floor protectors. Trim options include Pacific rimu, stained pine and anodised aluminium. Sizes, styles and tile colour options are vast and designed with Metro's styling in mind. See your Metro retailer to view the many options, or to collect a brochure.



Pioneer Fireguards

Sturdy yet elegant, designed to protect your family while enabling easy access with Pioneer's child-proof lock. Coated in a satin black baked enamel, the smooth rolled corners complement the styling of your Metro. Available in sizes to fit the entire range of Pioneer floor protectors.