

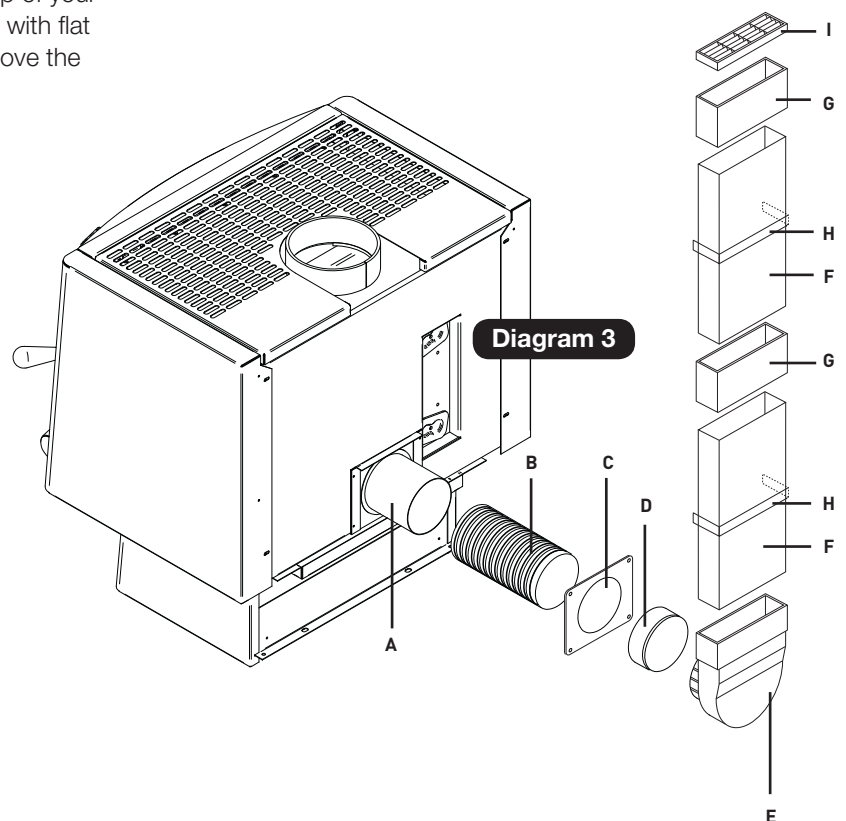
⚠ CAUTION! Important note to the installer

- Please ensure you have read these instructions, and that you are fully conversant with the installation of the DV Ceiling Kit
- Fixings (screws or rivets) are not supplied in this DV Ceiling Pack.

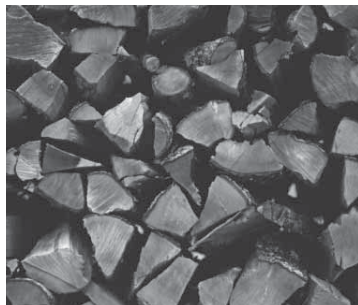
1. Once you have decided where your Metro is to be installed and with your wall lining removed you will have to place extra wall studs so that you have a cavity 250mm wide directly behind your Metro. Then install a cross dwang at a height of 225mm above the floor to the top of this dwang, this will support the weight of the ducting.
2. You will then have to cut away the top plate framing between the studs that you have just installed and remove any other cross dwang's between the top plate and the lower dwang that you have installed.
3. Now mark out in this cavity where to place the flat duct wall clips (H) you will need one on each length of flat duct. If your rear wall lining is Gib board these brackets will need to be attached with a suitable adhesive or screwed if your wall lining allows this. NB. These wall clips may not be required to support the ducting.
4. Assemble the flat duct elbow (E) to one length of flat duct (F), place the flat duct elbow on the cross dwang inside your cavity and clip the flat duct into the lower bracket.
5. Fit the flat duct joiner (G) on to the first length of flat duct (F) and fit the second length of flat duct (F) on top of the first, clip into the top flat duct wall clip (H).
6. The second length of flat duct may need to be cut down but should be a minimum of 300mm above the top of your ceiling joist. Then fit the second flat duct joiner (G) with flat duct inlet grill (I) fitted to the top of the flat duct above the ceiling joist.
7. Fit spigot extender (D) to the flat duct elbow (E) and cement in place with suitable PVC adhesive. You will then need to cut a 110mm round hole in the wall lining for the spigot extender (D) to protrude through before the wall lining can be fitted.
8. Once the wall lining is fitted fit cover plate (C) over spigot extender (D) and screw in place, then fit flexi duct (B) to spigot extender (D) and secure by drilling and screwing/riveting in three even points around the flexiduct/spigot extender.
9. Now remove the rear heat shield of the Metro, by removing the screws in each corner, and then remove the knock out panel in the rear heat shield located bottom centre.
10. Slide the stainless steel spigot (A) into the air inlet on the rear of the Metro. Refit rear heat shield to the Metro, the Metro is now ready to install.
11. Once your Metro has been installed connect flexi duct (B) to the stainless steel spigot (A) at the back of your Metro and secure by drilling and screwing/riveting in three even points around the flexiduct/spigot extender. The direct venting is now complete.

COMPONENT LIST

- (A) Stainless steel spigot
- (B) Flexi duct
- (C) Interior cover plate 100mm
- (D) Spigot extender
- (E) Flat duct elbow 100mm (round to rectangle)
- (F) Flat duct x 2 @ 1.5m long
- (G) Flat duct joiner x 2
- (H) Flat duct wall clips x 2 (optional)
- (I) Flat duct inlet grill



Direct Vent Kits Installation Manual



metrofires

Suitable for ECO DV Metros only

IMPORTANT NOTE –

Applications for installation of Metro Direct Vent models in the Christchurch City Council area are to have fees charged as for minor internal alterations instead of the usual solid fuel burner fee.

Information to be provided by applicants is to include flashing details for external wall penetration appropriate for the construction showing compliance with the NZ Building Code. Approved Direct Vents are from under floor or through external wall only - not from roof space.

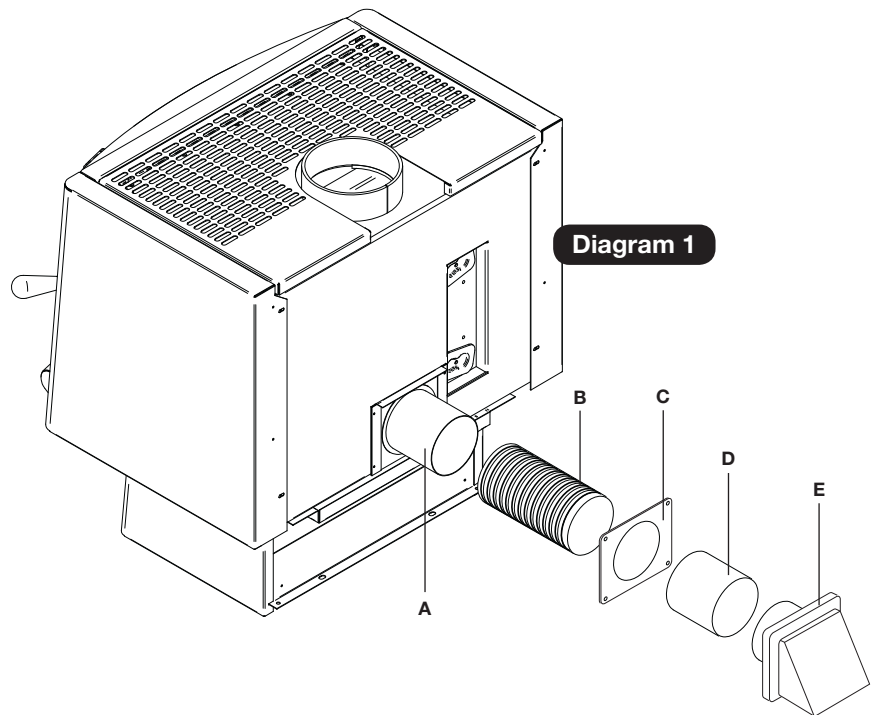
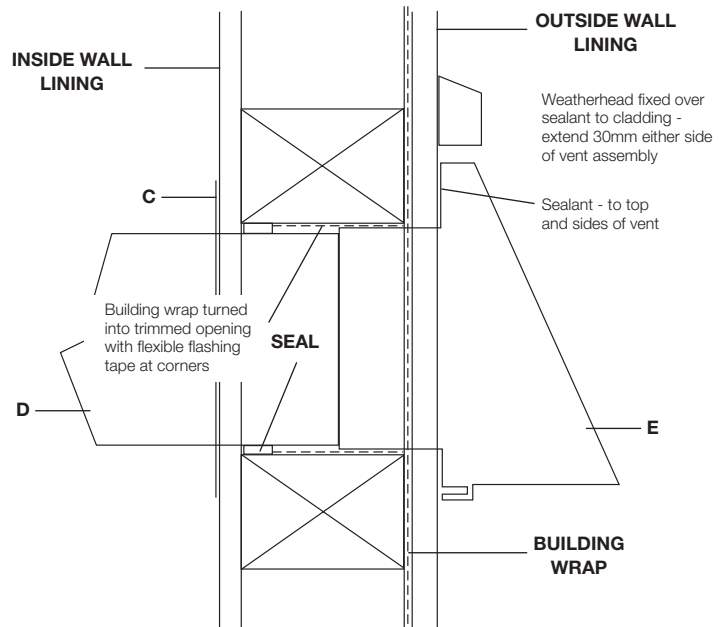
Direct Vent wall kit installation	Page 1
Direct Vent floor kit installation	Page 2
Direct Vent ceiling kit installation	Page 3

DV Wall Kit - Suitable for installations exiting through an exterior wall

⚠ CAUTION! Important note to the installer

- Please ensure you have read these instructions, and that you are fully conversant with the installation of the DV Wall Kit
- Fixings (screws or rivets) are not supplied in this DV Wall Pack.

1. Prior to positioning the Metro in its final sitting place, ensure that timber framing is not in the way of where the ducting is to exit through the wall. The ducting itself is 100mm in circumference, but suggest that a 110mm hole is cut.
2. Remove the rear heat shield of the Metro, by removing the screws in each corner, then remove the knock out panel in the rear heat shield located bottom centre.
3. Slide the stainless steel spigot (A) into the air inlet on the rear of the Metro. Refit rear heat shield to the Metro. The Metro itself is now ready for installation.
4. Mark the centre of the 110mm hole position on the wall, and proceed to cut either a round or square hole, through the interior and exterior wall linings.
5. NOTE - It is critical this installation does not allow the ingress of moisture into the wall framing, and therefore must comply with building code E2. It may also be necessary to remove a larger section of either inside or outside wall lining if this installation is into an existing building. The illustration right shows one option for installing this duct system through wall framing which is compliant with building code E2.



COMPONENT LIST

- (A) Stainless steel spigot
- (B) Flexi duct
- (C) Interior cover plate
- (D) Galvanised extender
- (E) Waterproof cover and mesh

DV Floor Kit - Suitable for installations exiting through a timber floor

⚠ CAUTION! Important note to the installer

- Please ensure you have read these instructions, and that you are fully conversant with the installation of the DV Floor Kit
- Fixings (screws or rivets) are not supplied in this DV Floor Pack.

1. Prior to positioning the Metro in its final sitting place, ensure that timber framing is not in the way of where the ducting is to be exited through the floor. The ducting itself is 100mm in circumference, but suggest that a 110mm hole is cut.
2. Remove the rear heat shield of the Metro, by removing the screws in each corner, then remove the knock out panel in the rear heat shield located bottom centre.
3. Slide the stainless steel spigot (A) into the air inlet on the rear of the Metro. Refit rear heat shield to the Metro. The Metro itself is now ready for installation.
4. Mark the centre of the 110mm hole position on the floor protector/floor, and proceed to cut either a round or square hole, through the floor protector/floor.
5. Please ensure if a pre-made floor protector is going to be used, the floor protector must also have a hole allowing for the flexi duct to be inserted through the floor protector. Pioneer offer a large range of floor protectors and offer all options with the hole in the floor protector as standard, but it must be pre-ordered in that form.
6. Fit one of the flexi ducts (B) to the floor housing (D) and secure by drilling three holes at even points around the circumference of the flexi duct/housing. Secure by screwing or riveting.
7. Fit the mesh (E) on top of the floor housing (D) and slide the component through the floor, adjusting the flexi so it does not hit the ground.
8. Fit the flanged adaptor plate (C) to the floor housing (D) by fitting a screw in each corner through directly into the floor/floor protector.
9. The Metro at this stage can now be fully installed, once in place; the other flexi duct (B) can be fitted over the stainless steel spigot (A), secured by drilling three holes at even points through the flexi and stainless steel spigot, fixing with screws or rivets.
10. Slide the other end of the flexi duct over the flanged adaptor plate (C), and secure by screwing or riveting in three even points around the flange/flexi duct. The direct venting is now complete.

